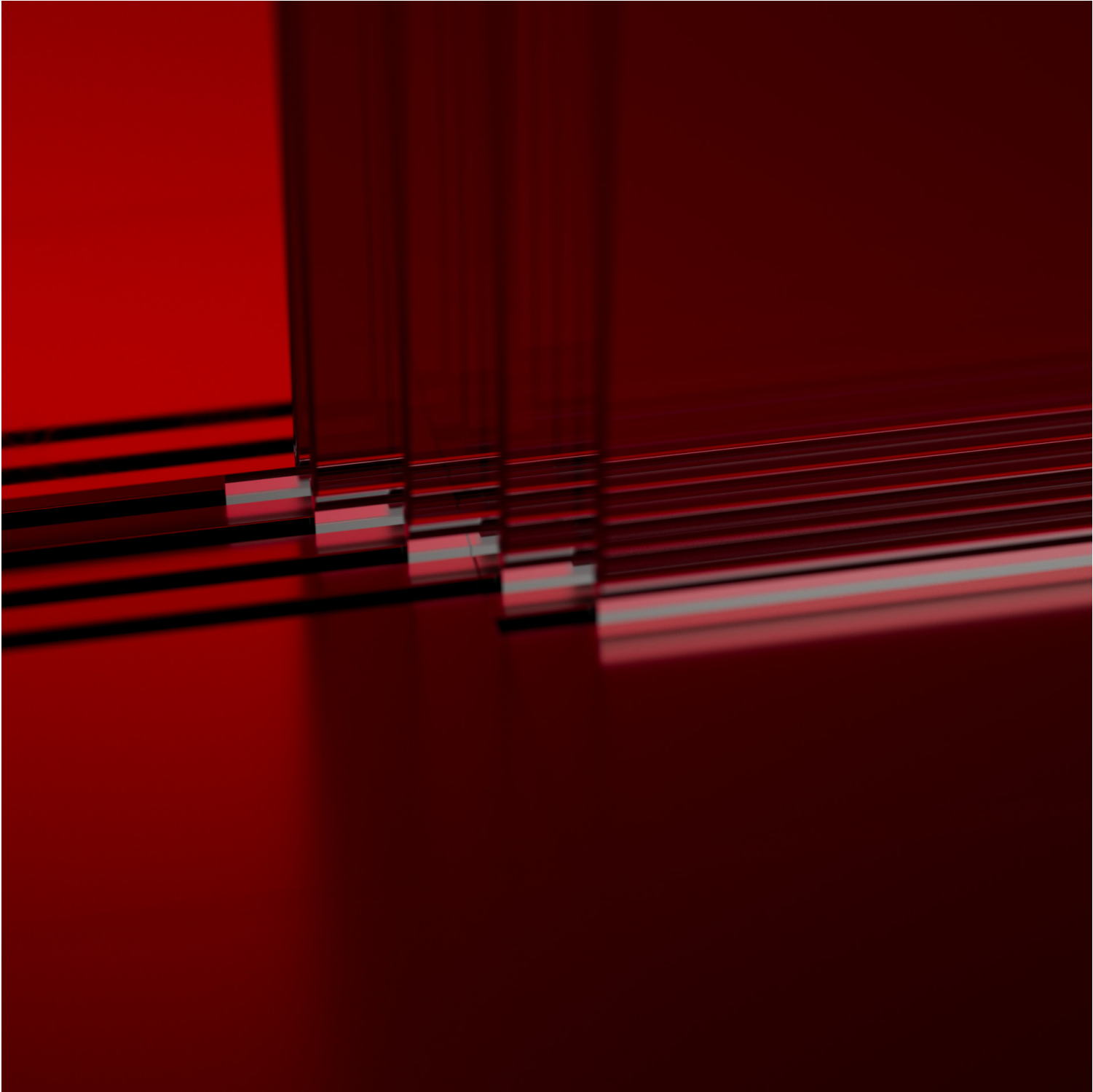


TDS
Technical Data Sheet

Release Date
2025



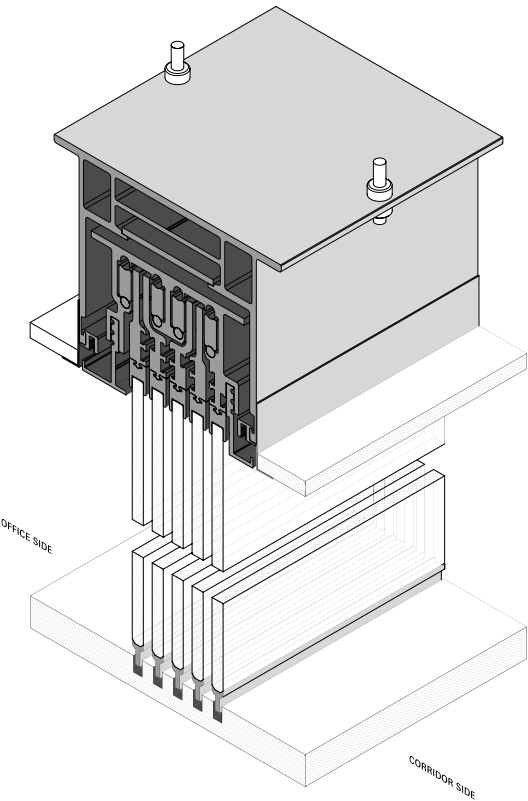
Designed to conceal sophisticated operating mechanisms and exalt the fluid gliding of glass slabs, the SC&A sliding door system, designed by Studio Cerri & Associati, defines flexible and permeable work environments that dynamically fulfil all contemporary office needs.

The SC&A sliding door system consists of overlapping sliding panels with a folding closure.

The synchronised operating mechanisms guarantee silent and gradual movement when doors are opened and closed.

Characterised by superlative visual permeability, the system efficiently divides and organises differentiated functional areas, maintaining climate and sound control.

MAIN FEATURES



PROFILES

- Integrated upper profile h. 170 mm (67 $\frac{1}{8}$ in), mounted on structural beams
- Synchronised movement of visible glass panels with rollers
- Slow motion system, to ensure gradual, silent and slow door closure or opening
- Co-extruded rails inserted in milled grooves integrated into the raised floor allow the glass panels to slide
- The system consists of a single fixed glass module and a variable number of sliding elements, from a minimum of 2 to a maximum of 4 elements
- A series of requirements must be verified by means of compulsory technical-structural analysis, before SC&A door installation
- The SC&A large sliding door is available in side opening and symmetrical central opening versions

GLASSES

- Stratified safety glass panel:
- 5 mm ($\frac{3}{16}$ in) + 5 mm ($\frac{3}{16}$ in) + 0,76 mm PVB film

HEIGHTS

- Maximum standard height: 3.000 mm (118 $\frac{1}{8}$ in)

ACCESSORIES

- The SC&A sliding door system is completed by:
- Vertical handle, with a characteristic graphic sign, designed ad hoc by Studio Cerri & Associati, which can be accessorized with a door set with lock

GLASS FINISH



VC
Transparent glass



CS
Frosted glass



Sample
glass



CH
Extra-clear glass



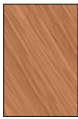
HS
Frosted extra-clear glass

SOLID PARTITION FINISH

Wood



AS
Sycamore



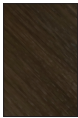
RV
Natural Oak



Sample
wood



NK
Straight-grained
Canaletto Walnut



5R
Thermo-treated Oak

Laminate



S4
White laminate



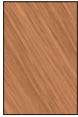
GP
Platinum Grey laminate



Sample
laminate



LS
Sycamore laminate



RY
Oak laminate

UniFor adopts management systems for quality, environment, and workplace health and safety, compliant with and certified according to UNI EN ISO 9001, UNI EN ISO 14001, and UNI ISO 45001 standards.

UniFor products are UL GREENGUARD Gold® certified, demonstrating compliance with chemical emissions standards and a commitment to protecting people and the environment, in line with the limits set by the UL GREENGUARD program.

Upon request, UniFor can provide products made with FSC® (FSC-C005654) certified materials. For more information, please contact UniFor at unifor@unifor.it."